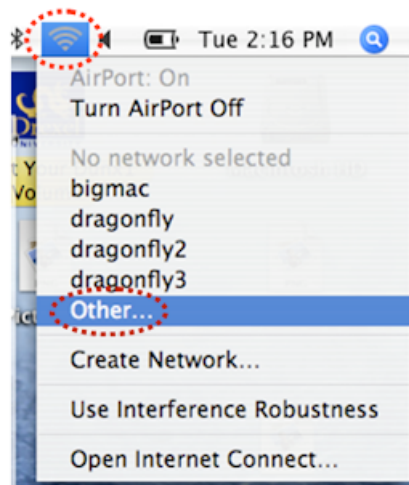


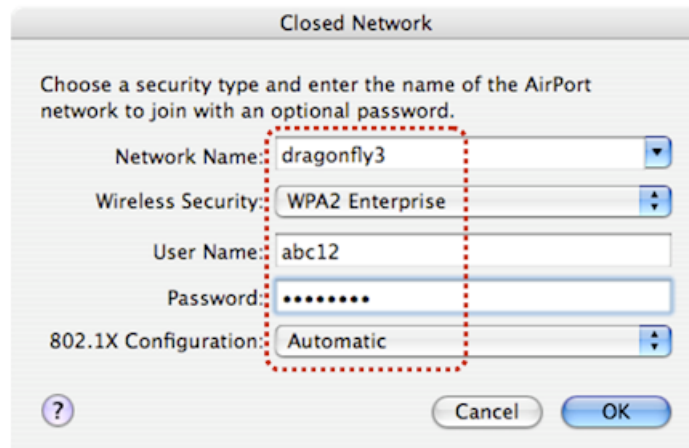
Connecting MacOS X to DragonFly3

The following instructions will guide you through the setup process for connecting a MacOS X computer to the Drexel DragonFly3 wireless network.

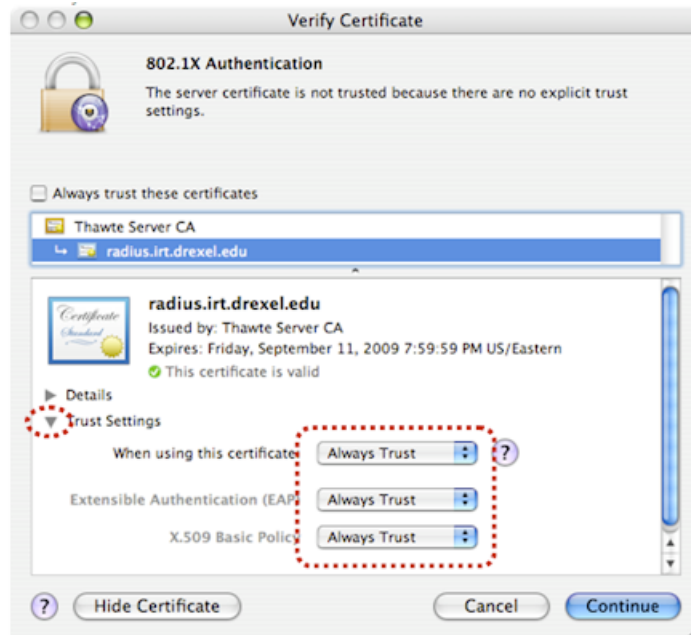
1. Click the *Airport* icon in the upper right corner of the menu bar and choose the **Other...** option.



2. In the **Closed Network** window, fill out the fields as follows:
 - a. Set the **Network Name:** drop down to **dragonfly3**.
 - b. Set the **Wireless Security:** drop down to **WPA2 Enterprise**.
 - c. Set the **User Name:** field to your official Drexel user name.
 - d. Set the **Password:** field to the password that corresponds to your official Drexel user name.
 - e. Set the **802.1X Configuration:** drop down to **Automatic**.



3. Click the **OK** button to close the **Closed Network** window.
4. In a few seconds, your Mac will attempt to connect to the DragonFly3 wireless network. When it does, a security warning will appear. When it does, click the triangle next to the **Trust Settings** option.
5. Fill out the fields as follows:
 - a. Set the **When using this certificate:** drop down to **Always Trust**.
 - b. Set the **Extensible Authentication (EAP):** drop down to **Always Trust**.
 - c. Set the **x.509 Basic Policy:** drop down to **Always Trust**.



6. Click the **Continue** button.
7. You are now connected to the DragonFly3 wireless network.