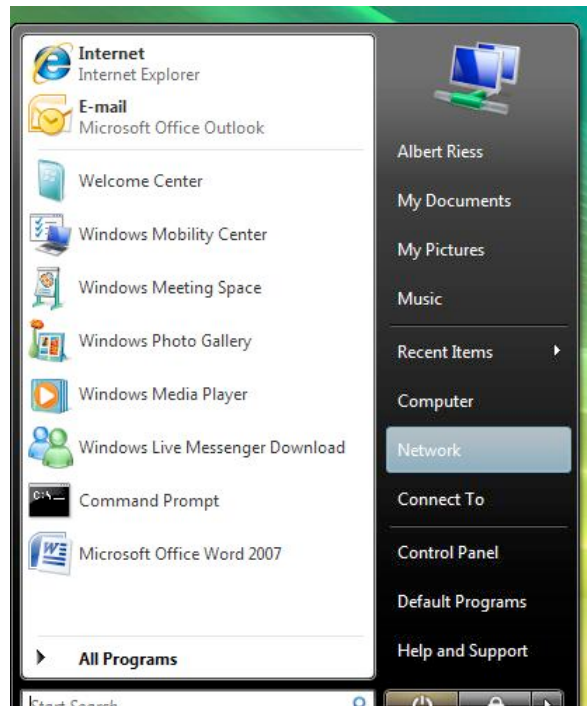


Connecting Windows Vista to DragonFly3

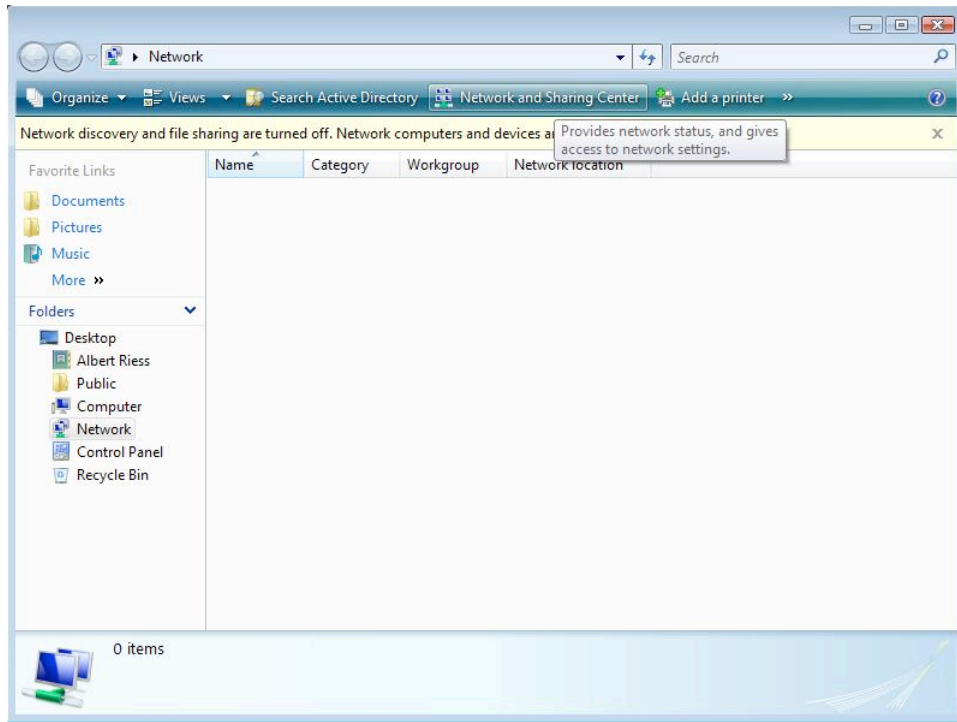
The following instructions will guide you through the setup process for connecting a Microsoft Windows Vista computer to the Drexel DragonFly3 wireless network.

PLEASE NOTE: Dell, Hewlett-Packard, Compaq, Lenovo, IBM and some other laptop manufacturers sometimes install their own custom wireless network configuration software on their equipment. The instructions below were created for using the Microsoft Windows Vista utilities for wireless network configuration. As such, if your laptop uses custom software, the prompts you see and the pop-up windows you encounter may differ from the instructions below. If that is the case, you should still be able to use steps 6-9 to obtain the correct configuration information.

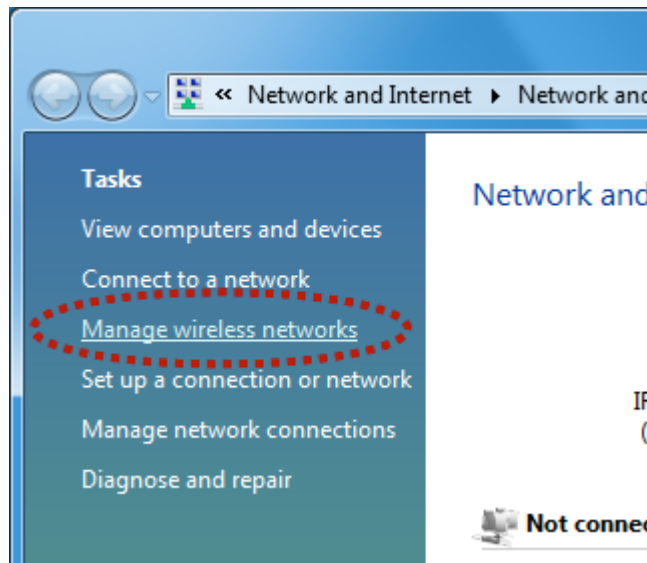
1. Click on the *HOME* menu and choose the **Network** option.



2. At the top of the window that appears, click the **Network and Sharing Center** button.



3. In the **Network and Sharing Center** window, in the left side menu, click the **Manage wireless networks** link.



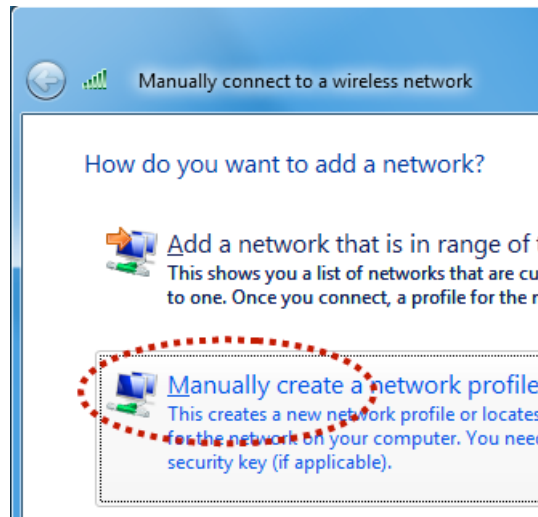
4. If *dragonfly3* appears in the list of **Networks you can view and modify**, click on the item to highlight it and then click the **Remove** button.



5. Click the **Add** button to begin configuring your laptop to use the DragonFly3 wireless network.



6. In the **Manually connect to a wireless network** window, click the **Manually create a network profile** button.



7. Under **Enter information for the wireless network**, fill out the fields as follows:
 - a. Set the **Network name (SSID):** field to **dragonfly3**.
 - b. Set the **Security type:** drop down to **WPA2-Enterprise**.

- c. Set the **Encryption type**: drop down to **AES**.
- d. Make sure the **Security Key/Passphrase**: field is empty.
- e. Make sure the **Start this connection automatically** option is checked.
- f. Make sure the **Connect even if the network is not broadcasting** option is NOT checked.

Manually connect to a wireless network

Enter information for the wireless network

Network name: dragonfly3

Security type: WPA2-Enterprise

Encryption type: AES

Security Key/Passphrase:

Start this connection automatically

Connect even if the network is not broadcasting

Warning: If you select this option, your computer will attempt to connect to the network even if it is not broadcasting.

8. Click the **Next** button.
9. Click the **Change connection settings** button to configure the security settings for DragonFly3.

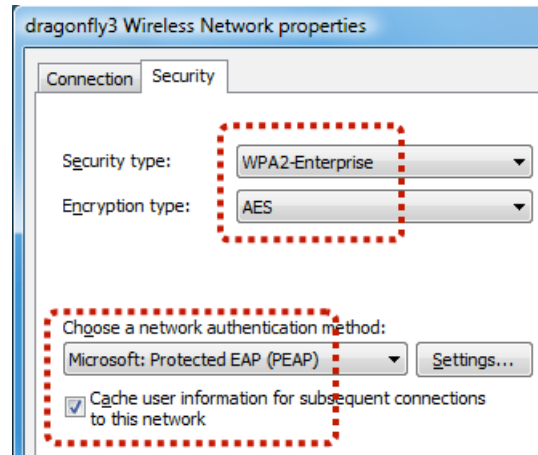
Manually connect to a wireless network

Successfully added dragonfly3

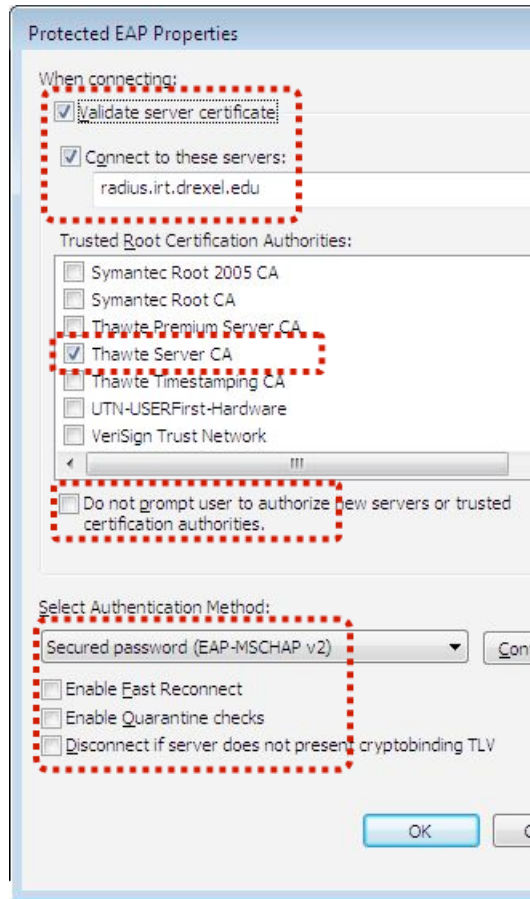
→ Connect to...
Open the "Connect to a network" dialog

→ Change connection settings
Open the connection properties so that I

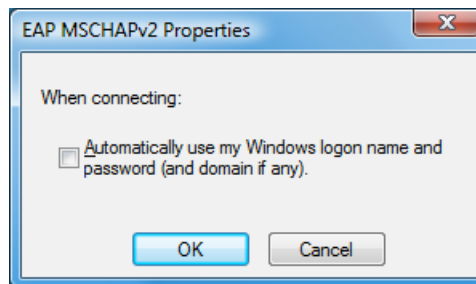
10. In the **dragonfly3 Wireless Network Properties** window, in the **Security** tab, fill out the fields as follows:
- Set the **Security type**: drop down to **WPA2-Enterprise**.
 - Set the **Encryption type**: drop down to **AES**.
 - Set the **Choose a network authentication method**: drop down to **Microsoft: Protected EAP (PEAP)**.
 - Make sure the **Cache user information for subsequent connections to this network** option is checked.



11. Click the **Settings...** button next to the **Choose a network authentication method**: drop down menu.
12. In the **Protected EAP Properties** window, fill out the fields as follows:
- Make sure the **Validate server certificate** option is checked.
 - Check the **Connect to these servers**: option and fill out the text box below with **radius.irt.drexel.edu**.
 - In the **Trusted Root Certification Authorities**: field, find the **Thawte Server CA** option and place a check next to it.
 - Make sure the **Do not prompt user to authorize new servers or trusted certification authorities** option is NOT checked.
 - Set the **Select Authentication Method**: drop down to **Secured password (EAP-MSCHAP v2)**.
 - Make sure the **Enable Fast Reconnect** option is NOT checked.
 - Make sure the **Enable Quarantine checks** option is NOT checked.
 - Make sure the **Disconnect if server does not present cryptobinding TLV** option is NOT checked.

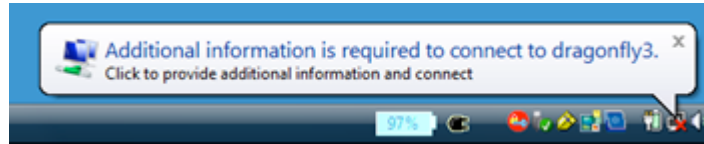


13. Click the **Configure...** button next to the **Select Authentication Method:** drop down menu.
14. In the **EAP MSCHAPv2 Properties** window, make sure the **Automatically use my Windows logon name and password (and domain if any).** option is NOT checked.

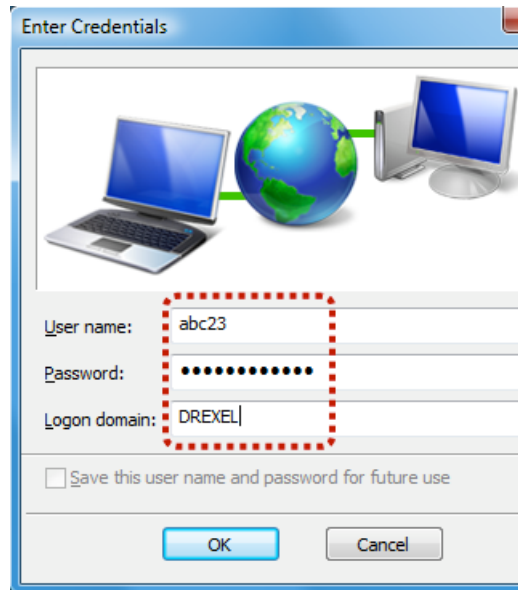


15. Click the **OK** button to close the **EAP MSCHAPv2 Properties** window.
16. Click the **OK** button to close the **Protected EAP Properties** window.
17. Click the **OK** button to close the **Wireless network properties** window.
18. Click the **Close** button to close the **Manually connect to a wireless network** window.

19. Within a few seconds, an **Additional information is required to connect to dragonfly3** dialogue bubble will appear in the bottom right corner of the desktop. Click on this bubble.



20. In the **Enter Credentials** window, fill out the fields as follows:
- Set the **User name:** field to your official Drexel user name.
 - Set the **Password:** field to the password that corresponds to your official Drexel user name.
 - Set the **Logon domain:** field to **DREXEL**.



21. Click the **OK** button to close the **Enter Credentials** window.
22. Your computer is now configured to use the DragonFly3 wireless network at Drexel. It may take up to 1 hour for the process to sync with the Drexel network after which time you will be able to use the wireless network.